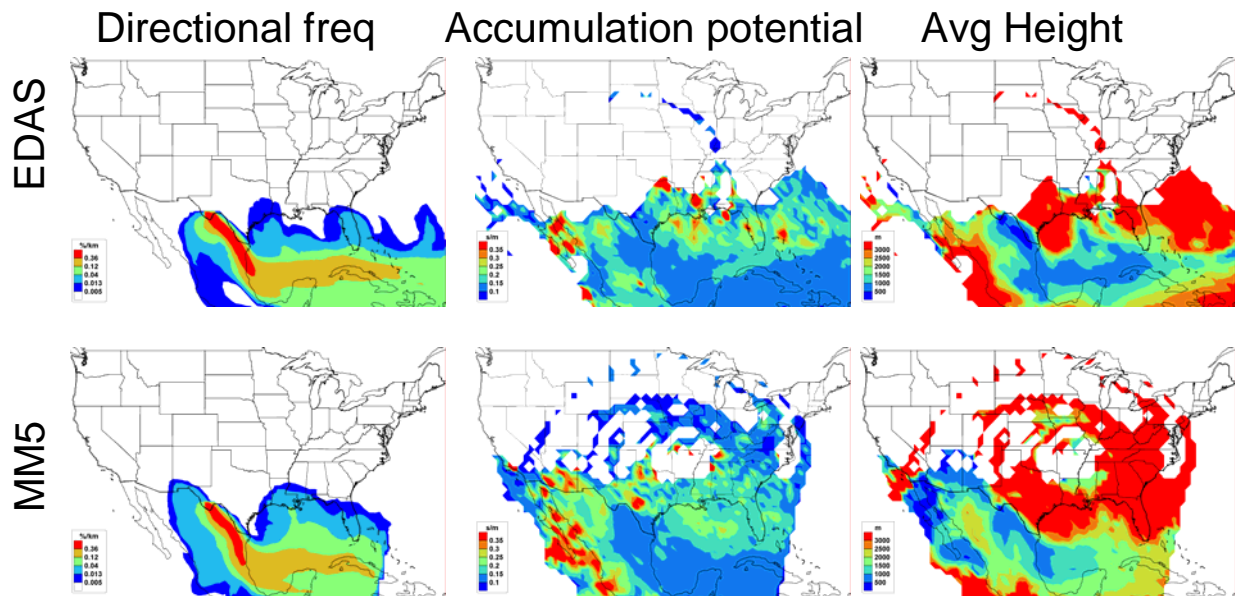


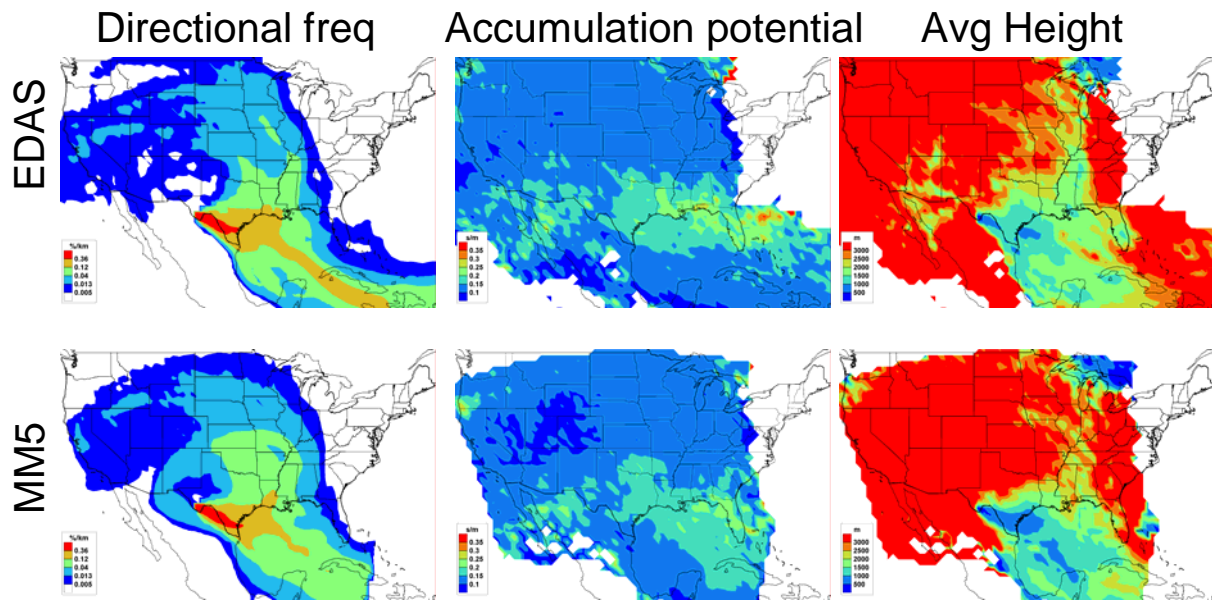
## **Appendix 8c. Airmass Transport to Big Bend, Texas, during Each Particulate Sulfur Episode**

The following figures present the decomposed residence time analysis for the seven particulate episodes at Big Bend NP. All residence time analyses used 10-day air mass histories generated by the CAPITA Monte Carlo model driven by either the EDAS/FNL or 36 km MM5 meteorological data. See section 8.1.3.1 for a detailed description of the air mass histories used in this analysis.

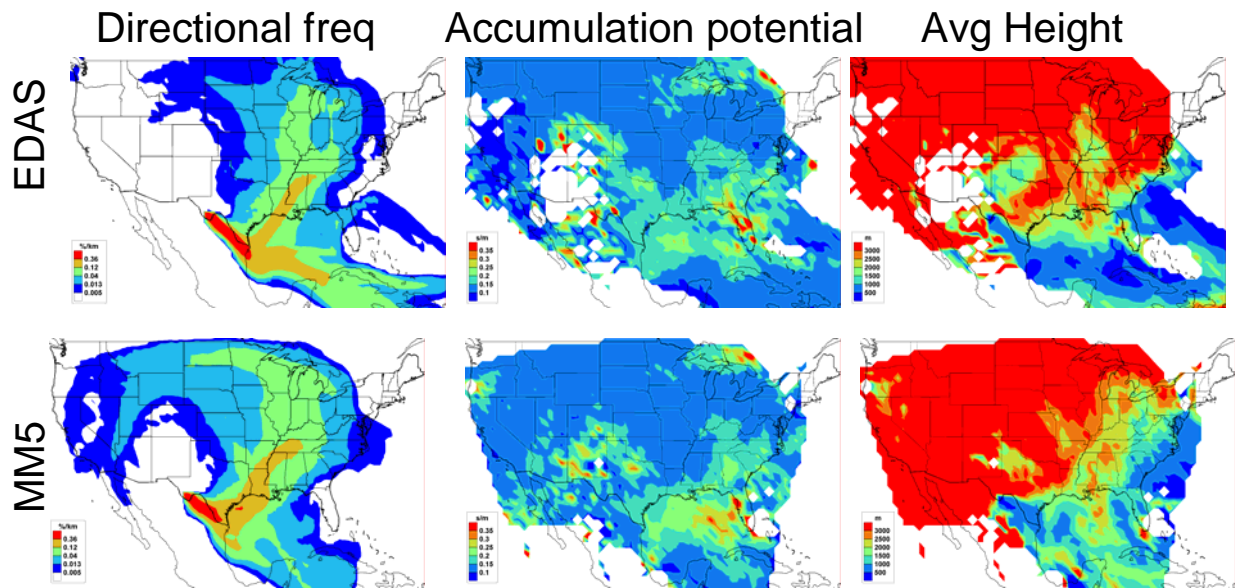
## July 22 – July 31



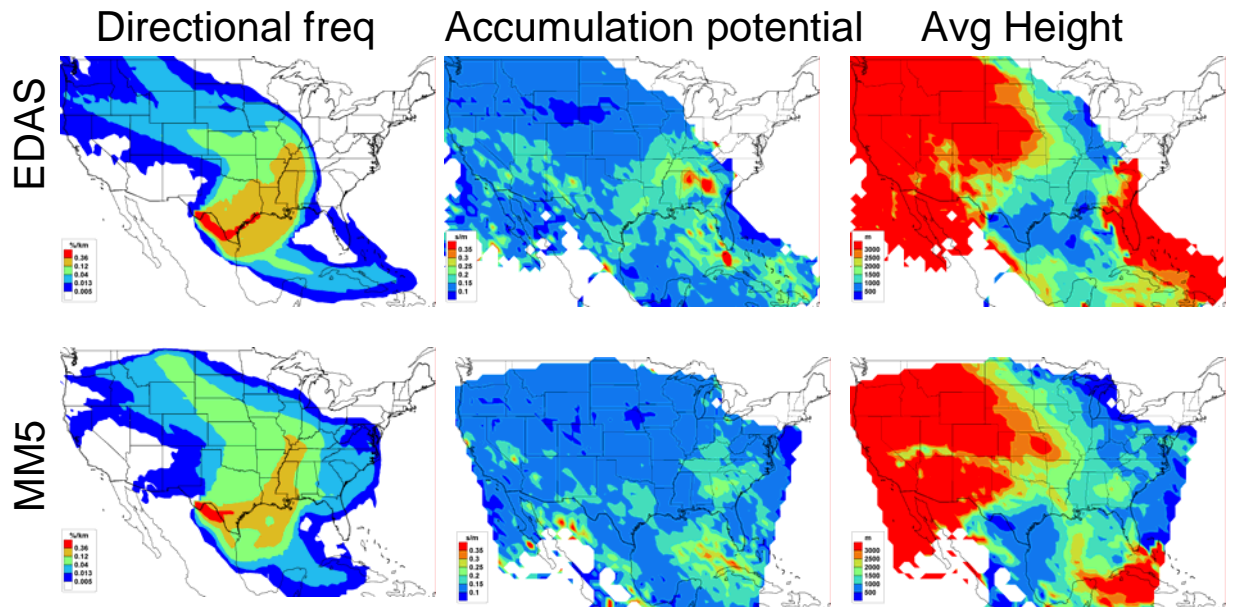
## August 16 – August 23



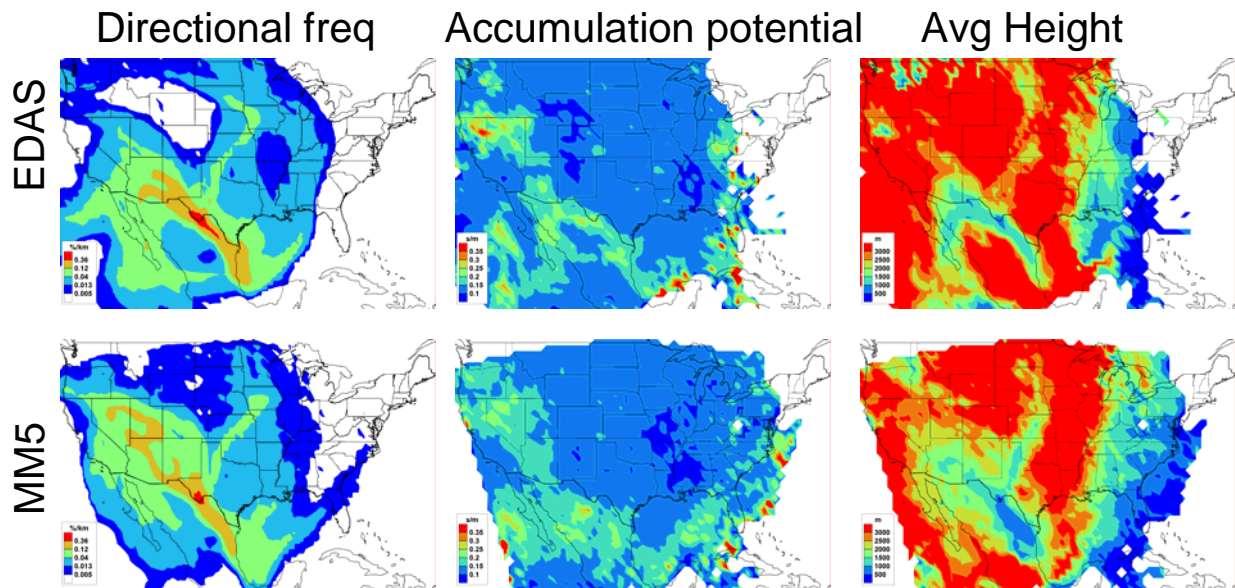
## August 30 – September 4



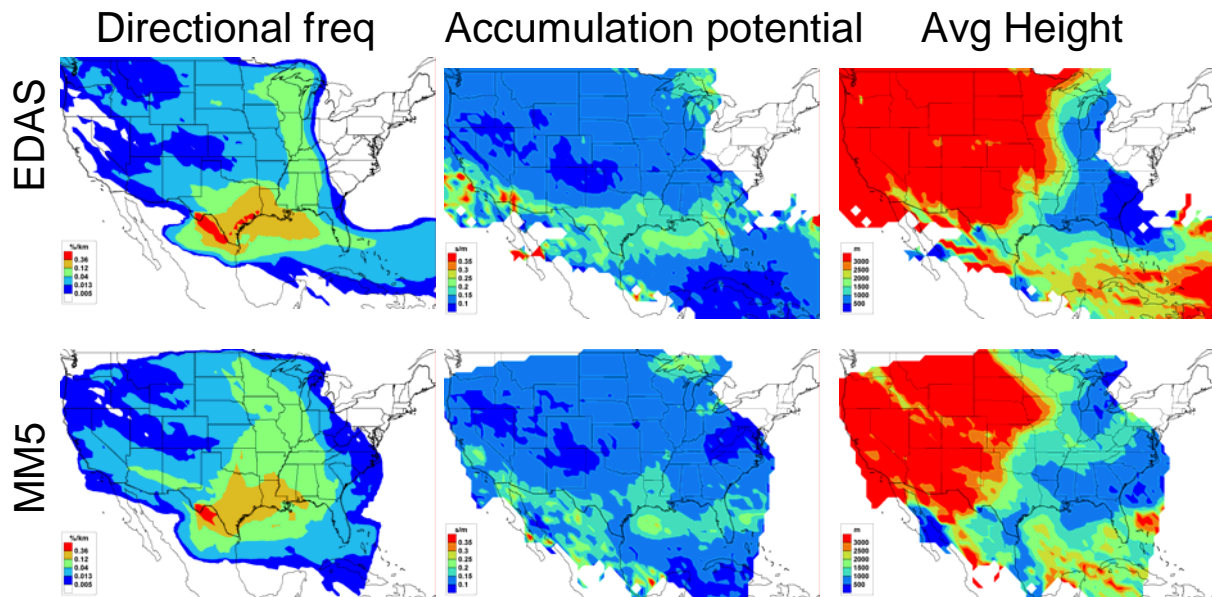
## September 12 – September 17



## September 25 - September 28



## October 3 – October 7



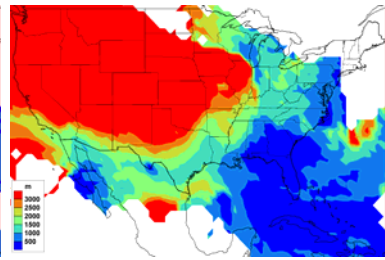
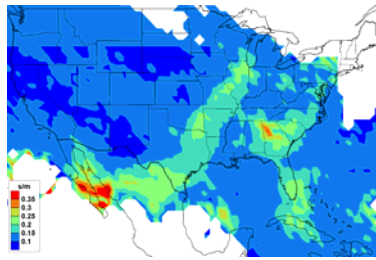
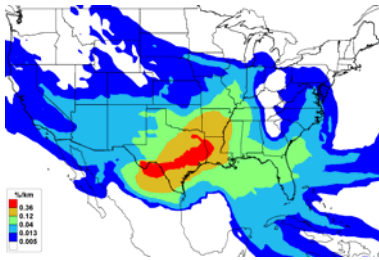
# October 11 - October 16

Directional freq

Accumulation potential

Avg Height

EDAS



MM5

