

**Syllabus for WRAP Technical Support System (TSS) Training  
Implementation Work Group  
February 15, 2007**

1. Introductory statements:
  - a. This training will focus on a specific set of data investigation tools; later trainings will be conducted to review the Weight of Evidence Checklist and Reasonable Progress Demonstrations
  - b. A visibility projections tool currently under development (we will look at the beta version today)
  - c. New tool development to stop, TSS team will spend next several months on various “clean up” tasks (site consistency, labeling, formatting, WOE checklist redesign, database/web site structural issues)
  - d. Completion of AoH Phase 2 document – user guide to the TSS

---

2. Overview of Home page navigation

2.1 TSS Home page

<http://vista.cira.colostate.edu/tss/>

- a. Resources page <http://vista.cira.colostate.edu/TSS/Results/>
- b. Methods page <http://vista.cira.colostate.edu/TSS/Methods/>



---

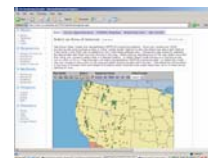
3. Access to Monitoring Data

3.1 Resources/Monitoring/Monitoring Data Browser

<http://vista.cira.colostate.edu/TSS/Tools/MonitoringData.aspx>

3.2 Start tab

- a. Select individual or multiple sites
- b. This tab is common to all tab-style tools



3.3 Time Series tab

- a. Review baseline and historical time series charts of IMPROVE data
- b. Review of tool options



3.4 Natural Conditions II tab

- a. Review glide slope and natural conditions charts
- b. Review of tool options



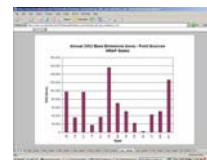
---

4. Access to Emissions Data

4.1 Resources/Emissions

<http://vista.cira.colostate.edu/TSS/Results/Emissions.aspx>

- 4.2 Emissions Summaries
  - a. State summaries, comparison of baseline and 2018
  - b. Regional summaries
  - c. State summaries and comparisons
  - d. County summaries




---

5. Access to Modeling Data

- 5.1 Resources/Modeling/Modeling Results Browser  
<http://vista.cira.colostate.edu/TSS/Tools/ModelingResults.aspx>  
 (or just click on the “Visibility Modeling” tab...)

- 5.2 Model Output tab
  - a. Review model results for 2002, the baseline period, and 2018
  - b. Review of tool options



- 5.3 Model Projections tab
  - a. Review species glide slopes, natural conditions, and 2018 predictions
  - b. Review of tool options

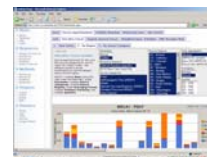



---

6. Access to Source Apportionment Results

- 6.1 Resources/Area of Interest  
<http://vista.cira.colostate.edu/TSS/Tools/Results.aspx>  
 (or just click on the “Source Apportionment” tab...)

- 6.2 SOx/NOx Tracer tab
  - a. Review contributions by source category and region to sulfate and nitrate modeled at a monitoring site
  - b. Review of tool options
  - c. Review of “By Region” and “Time Series” tabs



- 6.3 Organic Aerosol Tracer tab
  - a. Review the make up of modeled organic carbon
  - b. May help identify the influence of forest fires
  - c. Review of tool options



- 6.4 Weighted Emissions Potential tab
  - a. Review the results of the WEP analysis, designed to help states define regions of emissions most likely to impact monitoring sites
  - b. Review of tool options

