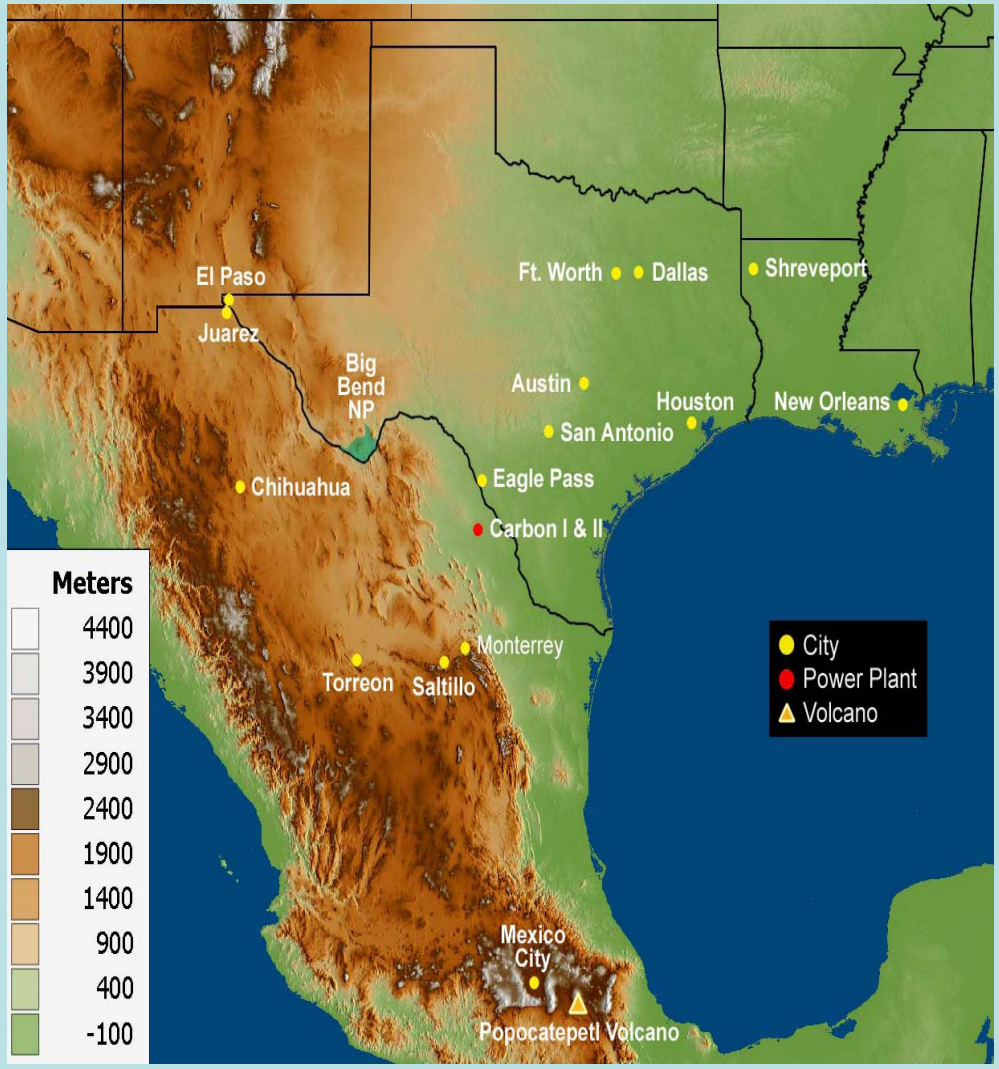


Understanding Haze in Big Bend National Park Big Bend Regional Aerosol and Visibility Observational (BRAVO) Study

Mark Scruggs, National Park Service

Presented at the BRAVO Public Meeting Alpine, Texas September 22, 2004

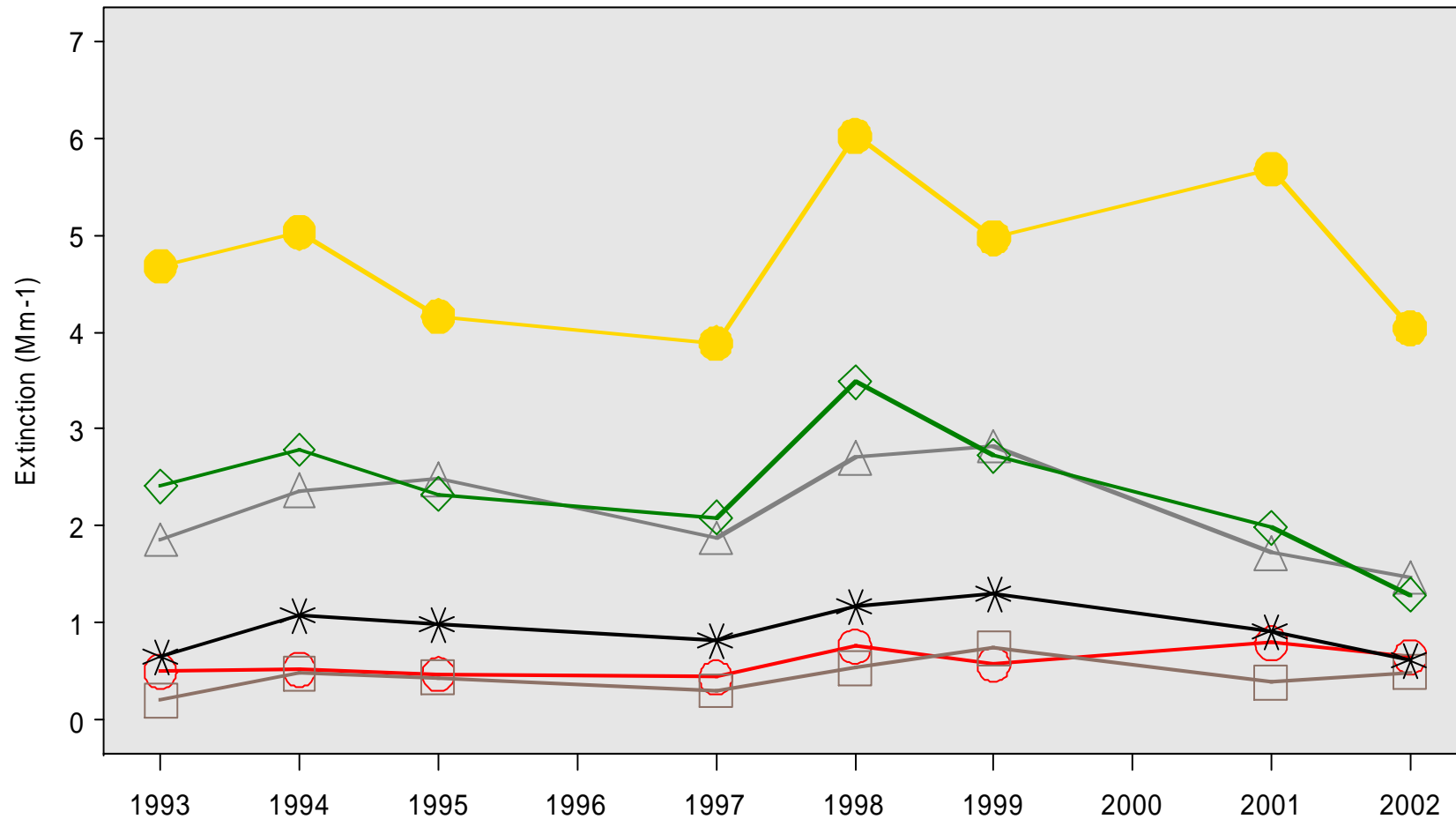








Annual Extinction by Component
Big Bend National Park--Best Days



▲▲▲ Coarse Mass

■ ■ ■ Soil

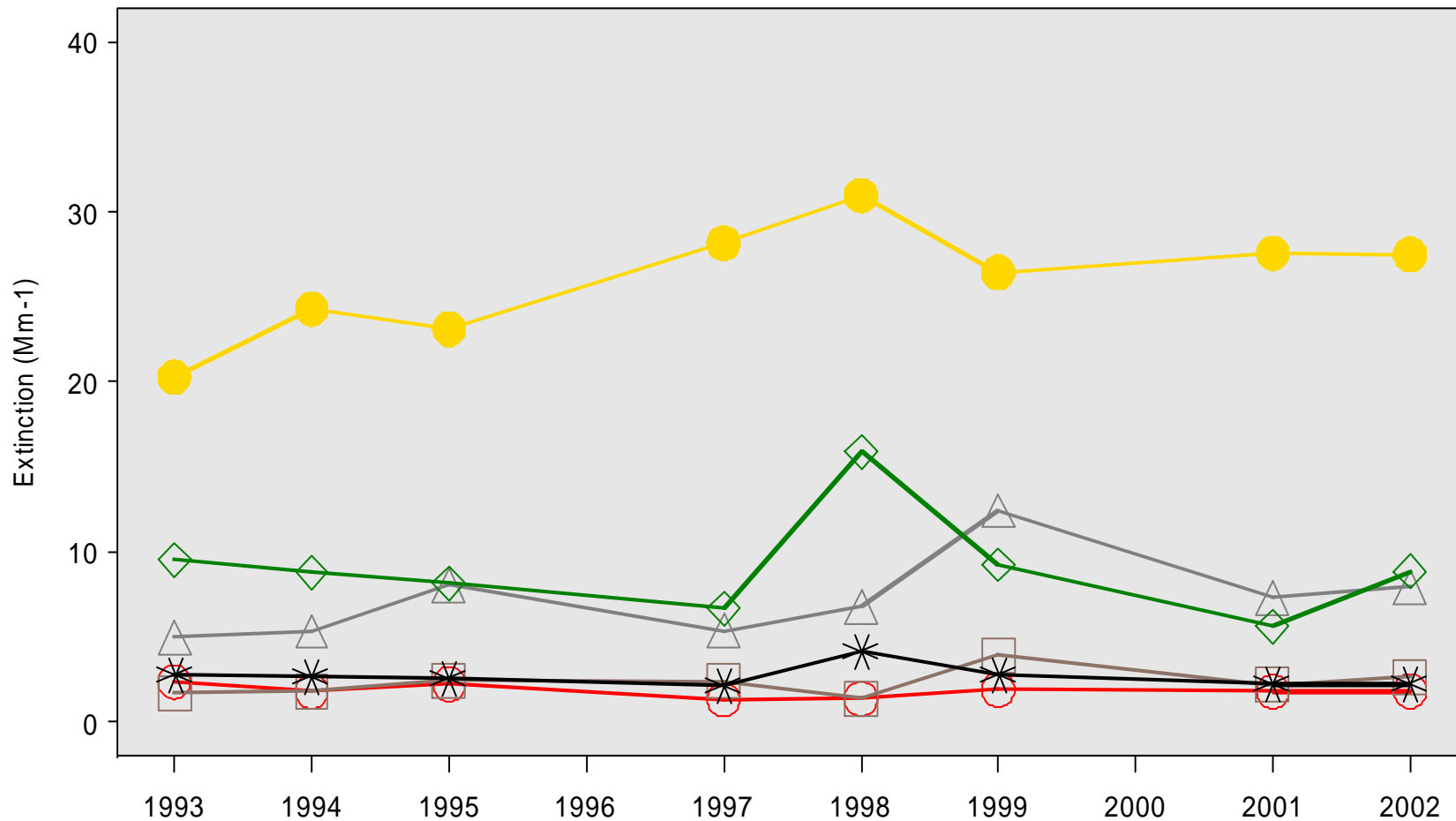
○ ○ ○ Nitrate

* * * Soot

◇ ◇ ◇ Organics

● ● ● Sulfate

Annual Extinction by Component
Big Bend National Park--Worst Days



▲▲▲ Coarse Mass	○●○ Nitrate	◇◇◇ Organics
■□■ Soil	* ** * Soot	●●● Sulfate

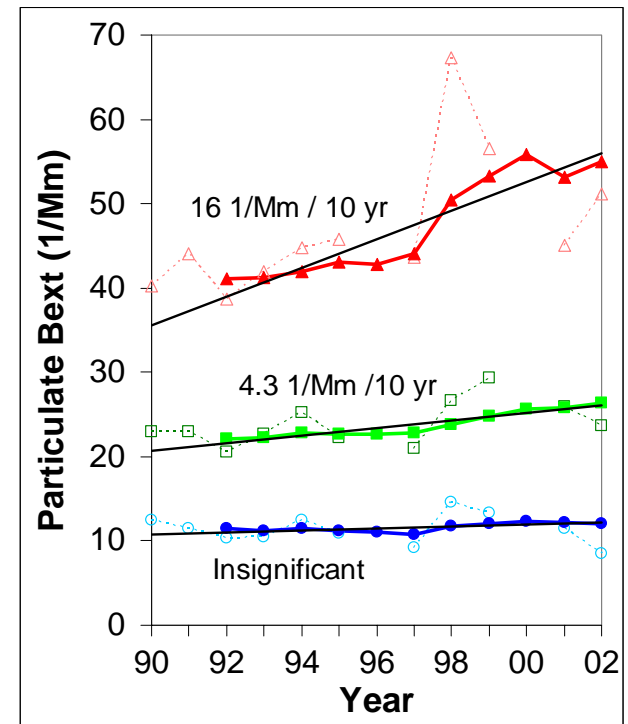
Background - Why study haze at Big Bend NP?



A beautiful, remote, and scenic park

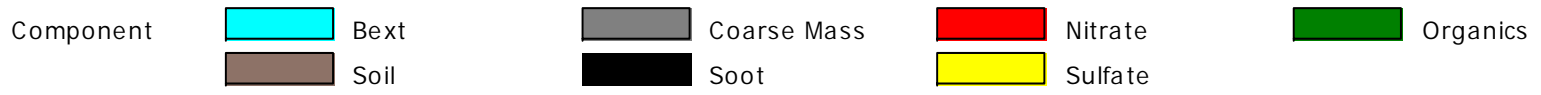
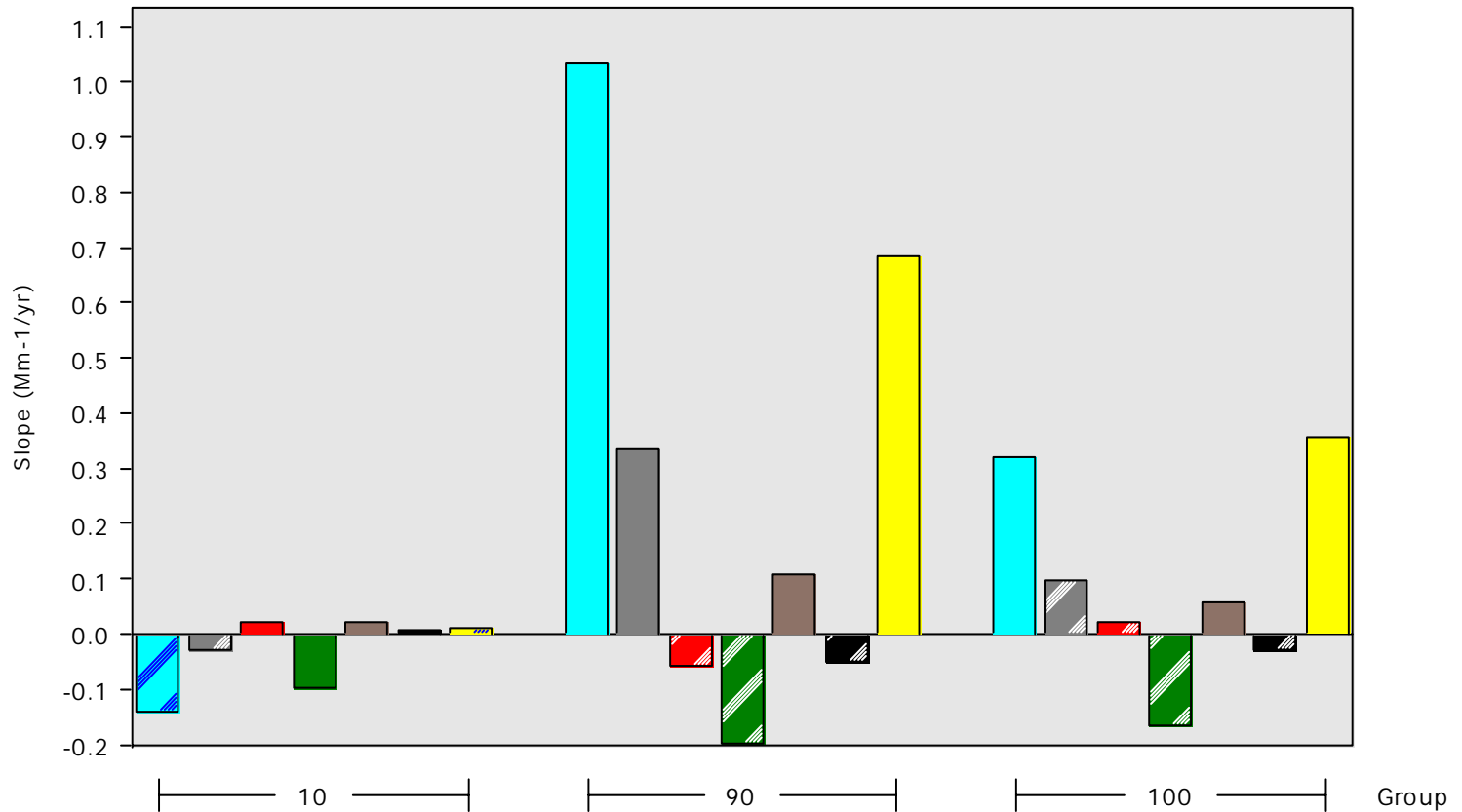


With
Some
of the
worst
haze in
the
west
...And
Getting
Worse

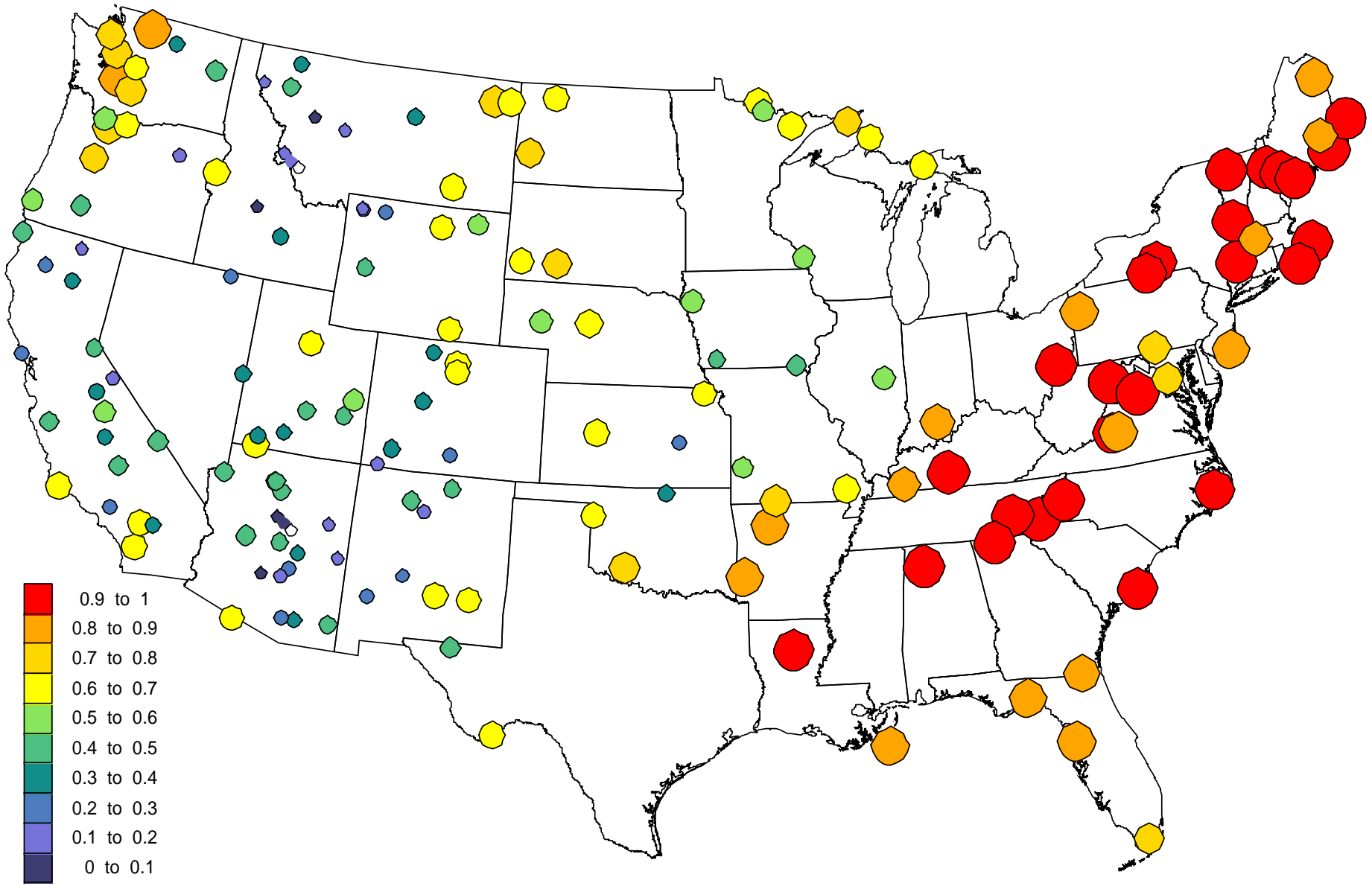


Summary of IMPROVE Extinction Trends by Group and Component Big Bend National Park

Bext is Reconstructed Extinction Excluding Rayleigh



R-squared of Regression Between Ammonium Sulfate Extinction and RBext



So, what did we learn from the
BRAVO Study?