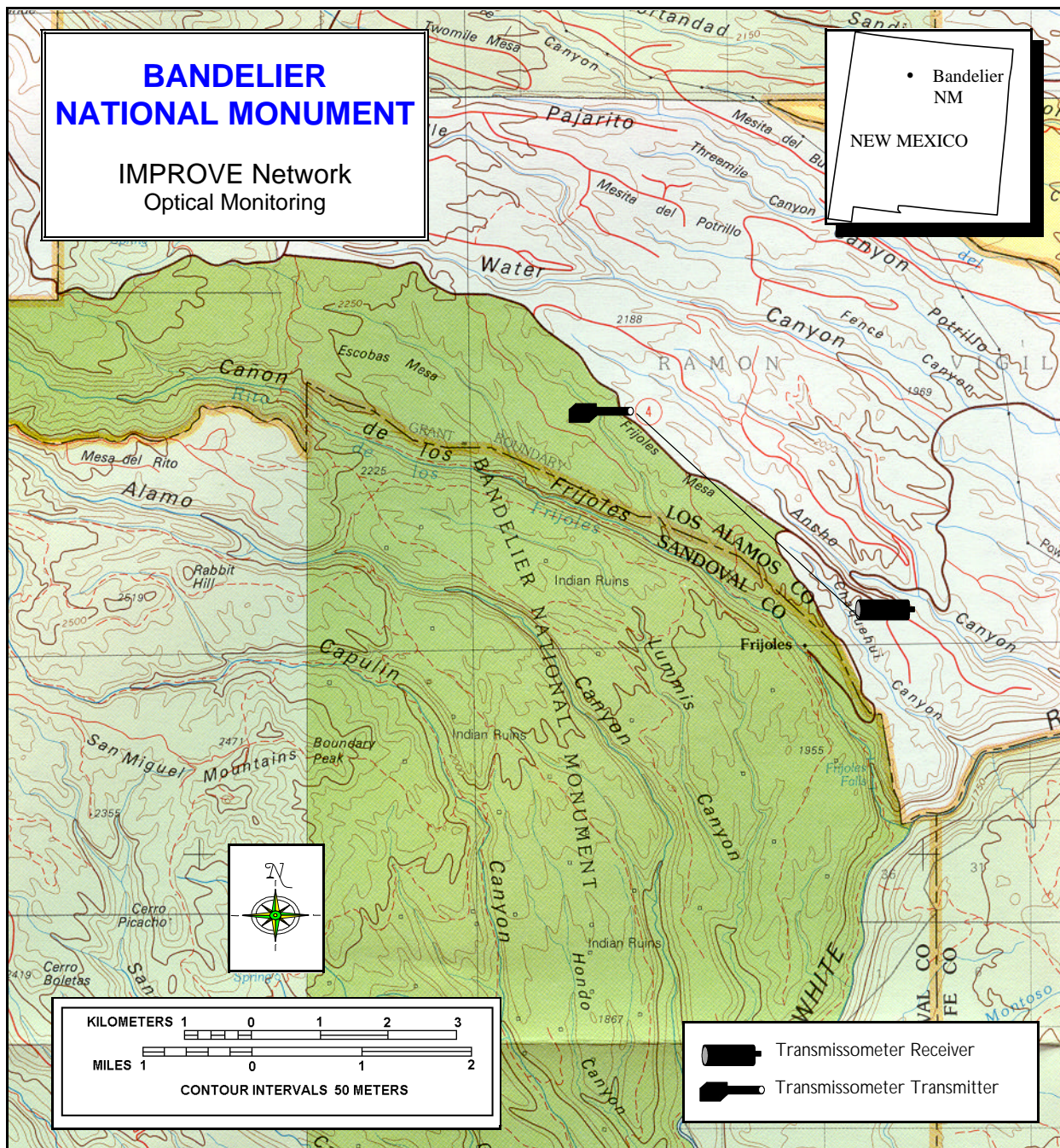


# BANDELIER NATIONAL MONUMENT

IMPROVE Network  
Optical Monitoring

• Bandelier NM  
NEW MEXICO



## SITE SPECIFICATIONS

Site Abbreviation: BAND1

Instrument: Transmissometer

Receiver  
Elevation: 2011 m  
Longitude: 106° 15' 39"  
Latitude: 35° 47' 05"  
Bearing: 315°

Transmitter  
Elevation: 2143 m  
Longitude: 106° 17' 51"  
Latitude: 35° 48' 47"

Sight Path  
Mean Elevation: 2077 m  
Elevation Angle: 1.65°  
Distance: 4.5776 km

Map Reference: Los Alamos, New Mexico  
1:100,000 1978  
N3530-W10600

Monitoring Period: 10/88 - current

